

2023 CUSTOMISED RANGE

A UK Company with over 17 manufacturing processes
Creative bespoke design and manufacture only restricted by your imagination



ABOUT US

Ancestors® was established in 1992 and has developed and evolved with a solid background and track record in research, creative design, sourcing, and UK manufacturing for the heritage and corporate sectors. The company has become uniquely placed to service these industries through its extensive knowledge and manufacturing capabilities.

We have been working with many heritage sites producing custom ranges and items since our inception and are proud of our association with the British Museum, Historic Royal Palaces, Victoria and Albert Museum, English Heritage, Historic Environment Scotland, Westminster Abbey, House of Commons, and numerous other heritage centers. Our factory has grown considerably over the years to enable us to manufacture a diverse range of products using different media which can be seen through this brochure but it really is only limited by your imagination.

OUR MULTITUDE OF MANUFACTURING PROCESSES INCLUDE

Laser Cutting

Laser cutting services cut parts from a wide variety of materials, ranging from plastics to organic materials to metals. From the most precise angles and corners to rounds of any radius, we are equipped to laser cut jobs of any size and volume. We're fit to work on large commercial productions or small prototyping runs.

High Definition Resin Doming

Our cutting edge technology can seal your decal in an automotive-grade coating that is crystal clear and very hard-wearing. We combine the highest quality crystal clear resin with a print quality of up to 2400 x 1200 dpi.

Jewellery Design

We currently design and produce quality jewellery for The British Museum, London; The Victoria and Albert Museum, London, Westminster Abbey, Edinburgh Castle, The National Gallery and many others. Whilst we specialize in costume /fashion jewellery we can also offer Fine Silver and Gold jewellery design.

Lamination

Protect and preserve your print. Lamination also deepens & brightens colours and improves contrast.

Crushed Marble Resin Casting

Detailed casting used for making our Studio Anne Carlton chess sets and any statue or resin item.

Enamelling

Our cold enamel process offers the advantages of traditional enamelling without the need and expense of kiln firing.

Dye Sublimation

A process to professionally and permanently apply an image into the surface of ceramics and other items.

Wiro Binding

for making notepads and calendars.

Lead-Free Pewter

Casting capability to cast almost any 3D model up to a maximum size of around 12cm.

Laser Engraving

We currently have 2 Trotec Speedy 300 precision machines, one fibre for metal and one CO2 for organic material. We can handle laser engraving jobs on all scales, even large volume production.

Laser Marking

Our Laser Marking operation employs many different laser systems including CO2 and Fibre lasers to deliver the highest detail and quality available on nearly any material. any material.

Micro Soldering

Our skilled craftsmen create items from different metals eg. cuff-links steel parts onto cast pewter decorations.

Gold Blocking

The traditional process of personalising stationery and leather goods, with metallic gold or silver foil.

Pad Printing

For personalising many items including our famous Goose Feather Pens.

Frame Making

We specialise in creative and innovative framing and can also decorate frames by hand.

Swarovski Crystal Gemming

For miniature replica crowns and jewellery.

High Definition Ink Jet Printing

Large scale banner printing through to fine detail doming jobs including our flexible magnets.

Hand Painting

For painting miniature crowns, figures and chess sets.

Digital Printing

Up to 300gms card for most packaging requirements.

MANUFACTURING



ANC Manufacturing is a leading supplier to promotional product distributors. We are a proud member of the Giftware Association, the British Jewellery Giftware & Finishing Federation and the Association for Cultural Enterprises.

Being part of the Ancestors Ancestors® Group, established in 1992. The business has developed and evolved with a solid background and track record in research, design and manufacturing for the heritage and corporate sectors. The company has become uniquely placed to service these industries through its extensive knowledge and manufacturing capabilities.

Over 17 different manufacturing processes are carried out in our premises in Folkestone and all can be used to create great products swiftly for the promotional market.

Crystal Clear Polyurethane High Definition Resin Doming

A domed label is simply a sticker with a protective resin coating. The glossy look of the resin gives an eye-catching 3d effect to label making. It is a very popular choice to ensure your product and brand stand out. The flexibility of our Crystal Clear resin offers further options to place onto flexible products such as our flexible fridge magnets. This amazing liquid encapsulation creates a domed magnification of an image whilst protecting it for a much longer life. Our services can include the printing and cutting of artwork and we pride ourselves on the High Definition of print we can achieve on our own specially-made high-quality polyester paper and high-resolution inkjet printers.

What are Dome Adhesive Labels used for?

Because of the way these labels are produced they are permanent and do not show signs of wear and tear. They are a great way



Doming machine

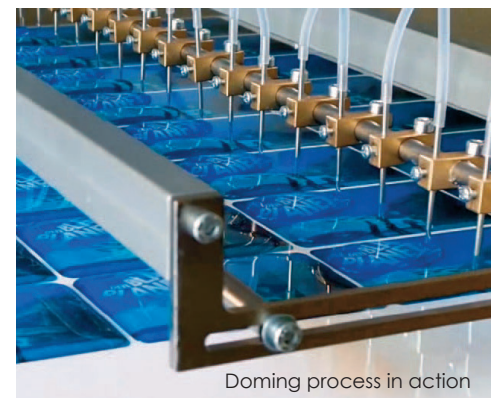
to promote branding and products and are often used by equipment manufacturers who apply them to their products using the 3-dimensional element for eye-catching effect towards the brand. As well as making your label stand out the resin coating is highly durable, UV resistant, and will not scratch or dent due to its bounce-back properties. Domed labels are very durable and are suitable for both indoor or outdoor applications and will endure long-term use. These domed labels are also known as badge labels; 3d labels; 3d stickers; bubble labels; bubble badges and resin labels. Using our UK dome label facilities gives you the edge on competitors waiting for longer worldwide deliveries. With our latest acquisition of the newest epoxy machine on the market, we can now offer a faster turnaround with more cost-effective prices than ever before.

What are the Benefits?

These self-adhesive labels have many benefits and options. They can be applied to many different surfaces including those rounded or

curved. Each label is hard wearing and self-healing which means it is scratch and dent-proof and looks "like new" after years of wear. The resin provides UV protection ensuring the design will not fade or yellow when exposed to daylight providing endless protection against other elements and environments.

Prestigious applications where image is important include the following: IT; promotional and automotive applications (wheel centres, gear shifts, etc); short or long run applications; name badges; asset labelling and areas of high impact or areas prone to abrasion.



Doming process in action

DOMING

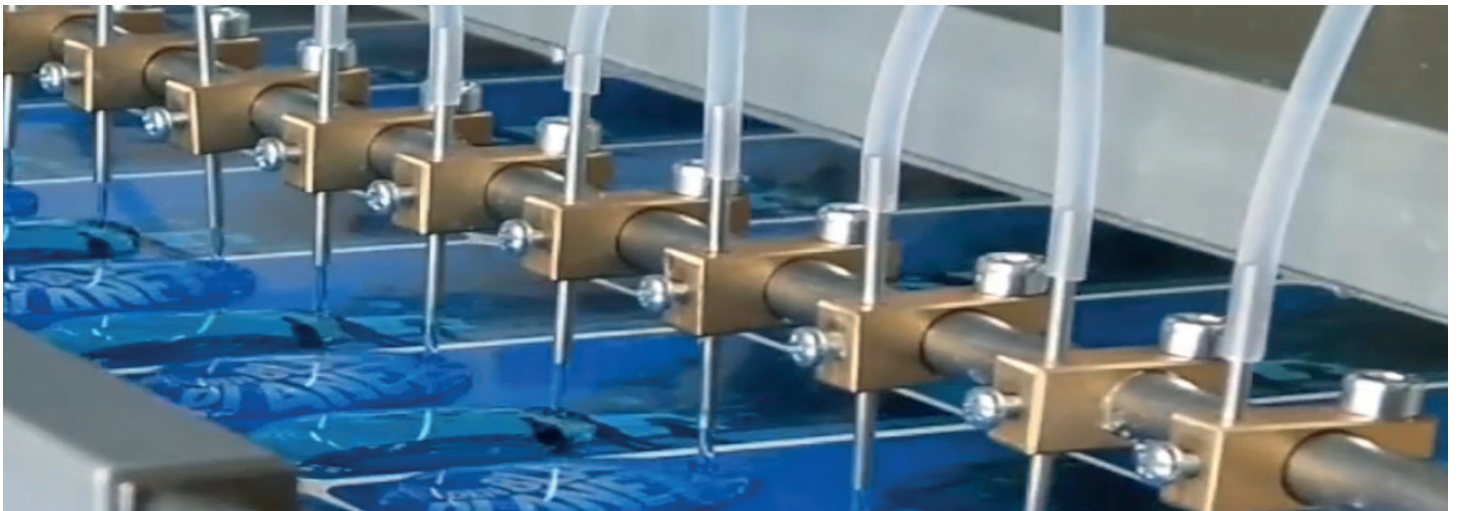


High Quality Inkjet printer

Label cutting using our "Summa" cutters



Domed labels ready for inserting into products



Doming in progress

RESIN CASTING

Machine and hand casting of resin in any colour, real stone, slate or even bronze finish



Resin gargoyles

Single figurines



Silicone Mould



Hand finishing in progress



A Studio Anne Carlton chess set

MADE IN GREAT BRITAIN

METAL CASTING

(LEAD-FREE PEWTER)

We can produce custom items using your designs or we can create designs for you. The production of all of our pewter products is carried out with a process called Spin Casting or Centrifugal Casting.

THE CASTING PROCESS

Our skilled artist use the traditional method of hand carving out of wax or pewter from original artwork or drawings.

A production mould is then made with the master casting being laid out on a silicone disc and then cured with heat and pressure in a vulcanizer.

This rubber mould is then spun in a centrifugal casting machine while pewter is poured into the centre of the mould resulting in a replica of the master metal design.

Once cooled this is then opened up and channels are cut for the molten metal to reach the impressions. These sub-masters are then put in a new production mould and placed into the vulcaniser and the above process repeated.

The completed castings are then fettled and rumbled to remove any sharp edges and imperfections then polished in a light detergent before being dried in the corn drying machine.

All pewter items can be finished in a variety of ways including polishing, to a bright silver colour finish; antiquing to accent the details or plated in silver, gold or other finishes.



Semi-automatic centrifugal casting machine



Casting in progress



Rings



Tokens



Coins



Crowns



Figurines



Key-rings



Bookmarks



Badge-pins

CASTING MACHINES

We use Four modern Semi-Automated centrifugal casting machine for our mass production and have several stand-alone manual pouring machines for lesser amounts and more intricate work.

Per annum, we process over 36 Tonnes of Pewter Tin Alloy.



Maize dryer



Manual centrifugal casting machine

ASSEMBLY

Highly skilled operators assemble and finish every item to exacting standards.

We can produce almost any shape including buttons; pin badges; golf ball markers; tooling; jewellery; findings; figurines; replica coins; medals; belt buckles; charms: key chains and many others.

NEW MACHINERY

Our latest purchase is this 100-litre capacity vibratory bowl finishing machine.

This takes over from traditional hand finishing of precision items taking our automated finishing to the next level.

HAND CAST PEWTER FIGURINES



St. George's Chapel, Windsor - figurines



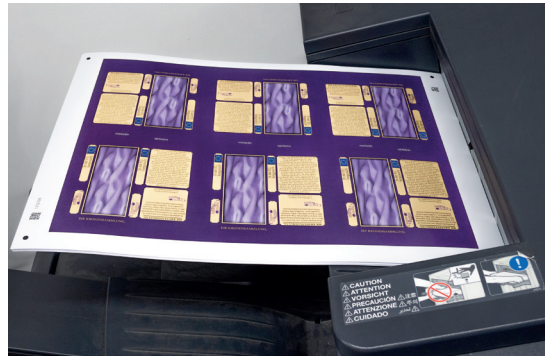
Vibratory bowl finishing machine

PRINTING, CUTTING AND FOLDING

Full-colour digital printing onto any substrate, die-cutting/creasing without the cost and NO set up of a die. We have just added to our range of machinery an Intec cutting/creasing machine.



Full Colour Digital Printer



Digital printer in action



Electric Guillotine



8 Colour Ink-jet Printer



Sublimation printer



Die-sublimation mug press



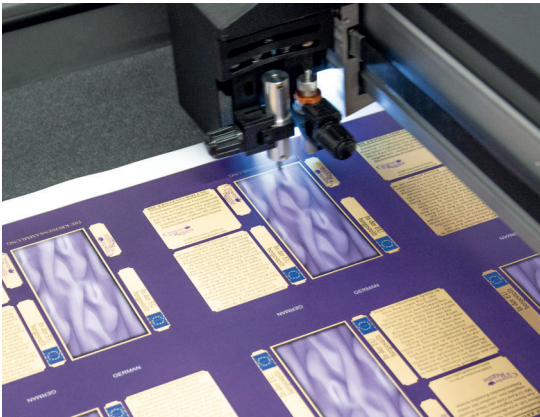
UV Flat bed Printer



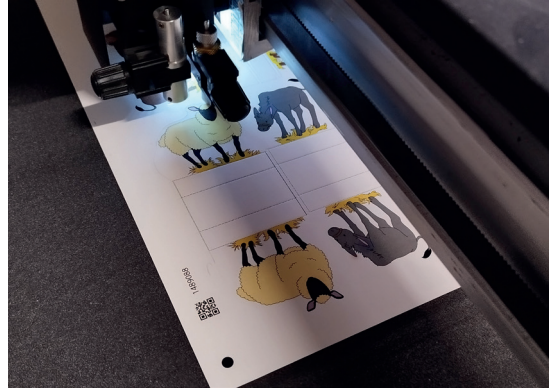
Cutting and creasing machine



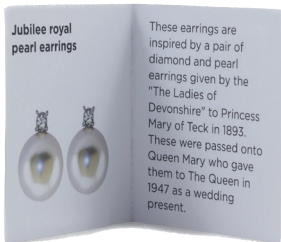
New for 2023
2nd Cutting and creasing machine



Cutting / creasing machine in action



A selection of boxes, packaging and shapes made, in house, using the cutting machines - Many shapes all fully customizable on low minimums.



Jubilee royal pearl earrings

These earrings are inspired by a pair of diamond and pearl earrings given by the "The Ladies of Devonshire" to Princess Mary of Teck in 1893. These were passed onto Queen Mary who gave them to The Queen in 1947 as a wedding present.

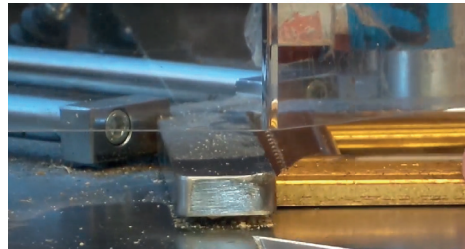
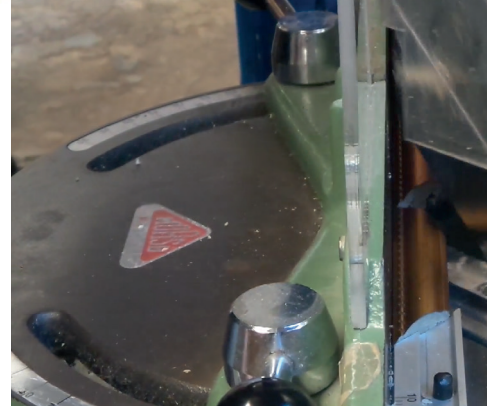


FRAME MANUFACTURING

Almost any frame mould can be used to make frames to your own size from small to large.



Mitre guillotine machine

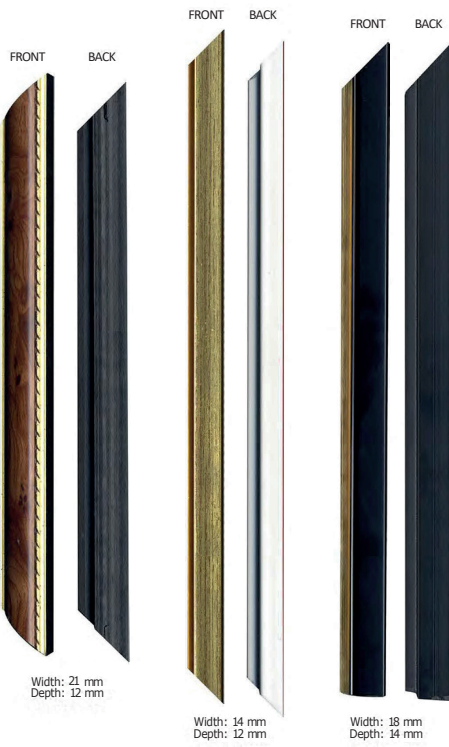


Pneumatic pinning machine

Frame mouldings



Pneumatic tab driver



LASER ENGRAVING

Our Laser marking operation employs many different laser systems including CO2 and Fibre lasers to deliver the highest detail and quality on nearly any material

Our Laser marking operation employs many different laser systems including CO2 and Fibre lasers to deliver the highest detail and quality on nearly any material



Personalised Jewellery engraving



Engraved metal keyring



Laser cut acrylic coffee shakers



Leather Laser Engraving



Engraved Signet ring



Wooden cut and engraved Coat of Arms



Ink-jet printed wooden Laser cut Decorations



Laser cut wooden names



Laser Engraved Glass

PAD PRINTING

Ink-jet printer used for printing artwork for pad printer



Exposure Unit for making pad printing plates



Pad printer



Pad printer in action



Pad printed feather pens



Pad printed shot glasses

LOW MINIMUMS & FAST DELIVERY

Are you looking for something different? Our "Crystal Lens" manufacturing capabilities provides a unique quality and feel to many of our products. Flexible rubber fridge magnets printed to museum quality standards and protected using clear epoxy doming resin. Hold and touch them, dig your nails into them and watch the mark bounce back without leaving a trace. The dome effect also gives a magnification and enhances the striking high image quality.

FLEXIBLE FRIDGE MAGNETS



Rectangular 74103
78mmx 53mm

A well-designed product will stay on display on the user's fridge for years, so if your thinking of a promotional item then this is a low-cost product with high exposure. The High-quality print and colours make for great creative freedom and are ideally suited to the souvenir market. They will stand out in front of all other magnets on sale.



Qty	Price
55	£1.57
275	£1.32
550	£1.24



Square 74102
60mmx 60mm



Round 74101
60mm diameter



Bespoke Pewter Pencil Pals Topper
MADE IN GREAT BRITAIN

THE ORIGINAL PENCIL PALS™

Qty	Price
12	From £1.46

Ancestors® Group is the leading manufacturer for the gift, souvenir and promotional marketplace. We have over 17 manufacturing capabilities that mean we can offer you low minimum order quantities and fast delivery.

We specialise in providing printed pencils in a choice of colour print options or with foil embossing to promote your business or brand. Our standard range of toppers from our TimeLine® brand is available to choose from, however, it is with our skilled model maker that we can offer you bespoke designs in lead-free pewter either polished, antiqued or gold/silver plated. Let us know if you have any other requests as we like a challenge.



For a no-obligation quotation for a bespoke design then please contact us. Ideally we would like a brief specification including; target recommended selling price; packaging; brand colours or logo; Quantity either initial or annual usage and if possible a photograph or website link.

We can also provide personalised packaging of the final product and provide samples of alternative styles to assist the selection process.



WOODEN DECORATIONS

Prices on Application



©Aardman Animations



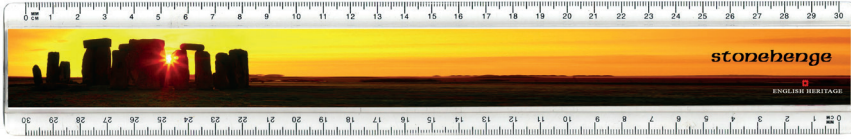
©Hever Castle



We are happy to discuss any specific ideas for product and/or finishes you may have. Please contact us

+44 (0) 1303 857200
 sales@ancestors.co.uk

STATIONERY RANGE OF PRODUCTS



Code: 72123	
Qty	Price
50	£2.10
100	£1.98
250	£1.57

RULERS
Our rulers are made to an exceptionally high quality exactly to your specifications. Design your own ruler insert or give us some images; logo's; company name; website address, telephone number and any other details and we will be happy to mock something up for you.

MAGNETIC NAME BADGES



Code 74040 70 x 36mm

Exceptional quality, choice of fittings, metal or plastic, fast turnaround and no minimum order or hidden fees!

Once you've designed your first staff name badge you can add any further names to the design either manually or by copying straight from an Excel spreadsheet.

Also other sizes available:
Code 74041 75 x 20mm
Code 74042 60 x 29mm
Code 74043 76 x 25mm
Code 74044 56 x 26mm (Oval)

Prices on Application

CRYSTAL LENS COASTERS
Our "Crystal Lens" round magnetic coasters can be customised to suit your needs. They provide a large 88mm print area that can be printed in full colour and can be combined with your logo. This product can be split across 4 designs.

PAPERWEIGHTS
These stylish heavyweight glass paperweights are supplied with a presentation box. Send us your logo or image which is then printed directly onto the glass.



Code: 74150	
Qty	Price
50	£5.31
100	£5.11
250	£4.91

LAMINATED COASTERS
These traditional coasters can be customised to suit your needs. They provide a large 88mm print area that can be printed in full colour and can be combined with your logo. This product can be split across 4 designs.



Code: 74036	
Qty	Price
100	£1.02
250	£0.98
500	£0.92

WIRE BOUND NOTEPADS
Front and back covers can be fully customised with your logo, suitable images and descriptive text. Each notepad contains approximately fifty sheets of quality blank paper.



Code: 08898	
Qty	Price
100	£1.46
250	£1.36
500	£1.13



Code: 74112-RCD	
Qty	Price
28	£3.80
55	£3.35
110	£3.13
550	£2.91
1045	£2.85



PERSONALISED SPOONS
With full-colour crystal lens decal and bespoke backing card to enhance the packaging.

Code: 72122	
Qty	Price
50	£4.04
100	£3.90
250	£3.80

CRYSTAL LENS PILL OR POCKET BOXES

Our pill boxes are made from the highest quality steel and have a push-button opening. They have a large print area that can accommodate any particular artwork or your logo in full colour.



Oval
Code 74004

Qty	Price
50	£4.04



Circular
Code 74033

CUFF LINKS

Our quality cuff-links are supplied in a mirror chrome presentation case and are suitable for full colour customisation. Available in round, square and rectangular designs.



Code 74013

Prices on Application



Code 74012



Code 74014



DOUBLE-SIDED KEY CHAINS

Our double-sided key chains have two full-colour print areas and can be customised to your design with logos and images.

Qty	Price
100	£2.56
250	£2.25
500	£2.46



Code 74019

Code 74018

Code 74017

Code 74203

COFFEE & TEA MUGS

Our ceramic coffee or tea mugs are available in small or large quantities and can be fully customised with an image of your choice, or branded with your logo. We use a vibrant Sublimation process.

Prices on Application

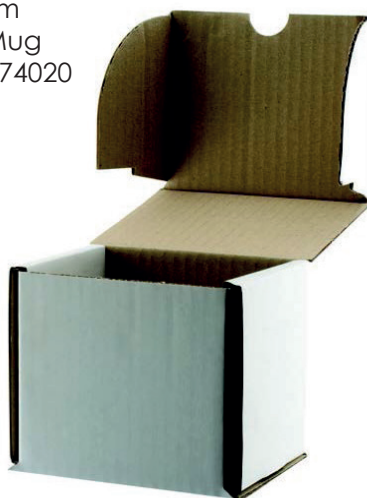


10oz
Durham
Style Mug
Code 74020

BONE
CHINA
WINDSOR
MUG
Code 74064



MUG BOX
Code
B-B022



SQUARE
SHOT GLASS
Code 72033



SHOT GLASS
Code 72030
These neat little glasses
can be customised with
your logo or brand image.
Prices quoted are for
single colour print

LASER ENGRAVED GLASS



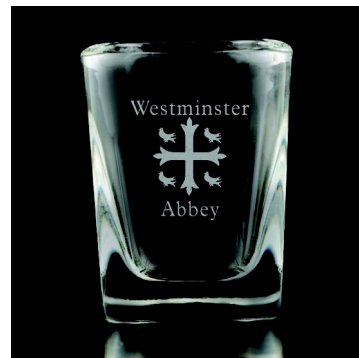
72540
1 pint Haworth Beer Glass
Tankard 58.5cl 20oz



72543
Savoie Wine Glass
24cl 8.5cl



72544
Latte Toughened Glass
29cl 12oz



72537
Double shot
Square Glass

COLLECTIONS



Framed
Picture
Magnet



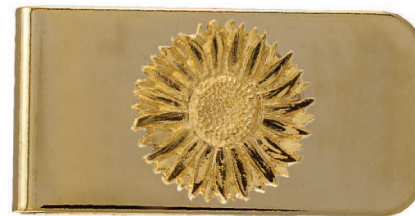
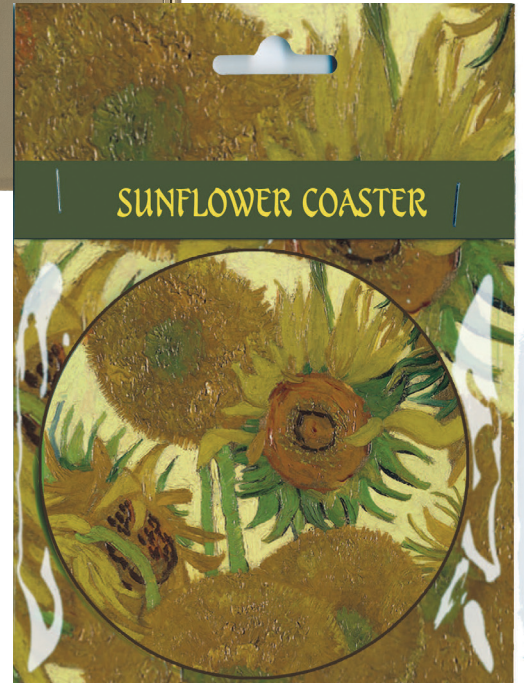
Pewter Pin
Badge



Pencil
Topper With
Gold Foil
Embossed
Text



Business
Card
Holder



Money clip



Pendant



Earrings

We are happy to discuss any specific ideas for product and/or finishes you may have. Please contact us

+44 (0) 1303 857200
sales@ancestors.co.uk

After successfully helping the retail sector with Jewellery and offering a bespoke service we too can offer this as an alternative. Minimums are not out of reach and we also have a licence with Swarovski to make that item extra special.

Prices on Application

Give us a brief and guide to your budget and let us work our magic.



©Canterbury Cathedral



©Westminster Abbey



©Victoria and Albert Museum, London



©Edinburgh Castle



©Hever Castle

BESPOKE JEWELLERY

CREATE YOUR OWN EXCLUSIVELY DESIGNED JEWELLERY

Custom  Express
CUSTOM JEWELLERY



Exclusively designed for
The Historic Scotland



Exclusively designed for
The British Museum



Exclusively designed for
The British Museum



All our custom jewellery is designed by Nicholas Humphery-Smith who has many years of experience working with companies like the British Museum, London; Victoria and Albert Museum, London, Westminster Abbey, Edinburgh Castle, National Gallery and many others. The quality of jewellery is very high, as expected for such prestigious customers, and whilst we specialise in costume/fashion jewellery we also offer Fine, silver and gold jewellery however the costs are substantially higher due to the current higher cost of precious metals.

Many customers ask if we can produce replicas and whilst this is possible, in our experience, we have found that to produce a true replica, the exact materials and size are required and this would need very detailed drawings and may not always be possible. Additionally, it can also take a very long time going backwards and forwards with samples to ensure the curatorial staff are happy with the finished item. We would therefore always suggest that we would work on an inspired piece of jewellery that would be more commercial and able to use modern finishes, crystals and techniques. The finished item can be very similar to the original if required or developed into a fully inspired piece taking an aspect of an object.

So how do you proceed to get your own designed range of jewellery?

Stage 1. Send us clear instructions together with high-resolution images of the object/s to be turned into jewellery. If fashion jewellery then this can be created to look like fine jewellery if the price is an issue.

Stage 2. We then turn the image(s) into a simple interpretation of what the jewellery would look like advising on the stones, crystals and finishes being proposed in a draft drawing. Time-scale 7 -10 days.

Stage 3. You or your client then view the draft drawing and make any comments/changes. A possible re-submission may be required until all are happy with the design.

Stage 4. The draft CAD drawing will be accurately drawn with sizes and relevant stone/crystal codes and a cost price will be prepared. Time-scale approximately 3 – 5 weeks.

Stage 5. You or your client then consider the drawings carefully making any final modifications. Any re-drawings and re-pricing will take place at this stage until all is approved. Any re-drawings can take a further 2 weeks. Once the drawing is approved you then commit the project and minimum order quantities subject to receiving a satisfactory sample.

Stage 6. Manufacture of the model and first sample 6 – 10 weeks depending on the complexity and assuming that the first sample is accepted. Changes at this stage can take a further 4 – 6 weeks.

Stage 7. You or your client approves the samples and places an order for at least the minimum quantity quoted at stage 5.

Stage 8. Manufacture of production pieces and supply of the order 7 – 10 weeks.

The minimum order quantity for a specific design does depend on each item and its value and if fashion or fine jewellery but would usually be between 25–50 pieces for each item. So long as the minimum is ordered then there is no charge for the design or modelling. If a piece does not go through to the ordering stage then there could be a charge for the model.

All fashion jewellery is made using lead-free pewter and where possible Swarovski elements. Silver and gold would be hallmarked (where required) in the UK and (if required) Jewellery will be handset with either diamonds, precious stones, cubic zirconia or Swarovski elements as directed depending on price.

We can also discuss packaging solutions for you either specific to your need or using our generic boxes and pouches. Most of the jewellery we produce tells a story and therefore we do like to produce a provenance or story card to go with each piece – telling a story does make the jewellery special and more collectable – we can help you with the story card, if required, and provide finished printed cards on the same small quantity as the jewellery using our in-house printing processes.

To get an idea of some of the jewellery we have produced in the past under licence for various museums please visit www.inspiredtreasures.co.uk. This site gives full retail prices all at good margins.

If in the first instance you would like to receive an opinion on the item(s) you are interested in then please forward images to me with your instructions. If you require any further information please contact me directly.



Nicholas Humphery-Smith

Managing Director
Ancestors Group

BESPOKE JEWELLERY

We have years of experience in creating inspired jewellery working with many prestigious organisations including the V&A, British Museum and Cathedrals.

Minimum order quantities are not out of reach and we also have a licence with Swarovski to make that item extra special.

NECKLACES & BRACELETS

Iona Abbey



This range of jewellery was inspired by the central panel of the High Altar and reredos in Westminster Abbey



NECKLACES

Hever Castle



EARRINGS



CUFF-LINKS



Westminster Abbey

BROOCHES



Edinburgh Castle



Canterbury Cathedral



St. George's Chapel, Windsor

Prices on Application

We are happy to discuss any specific ideas for product and/or finishes you may have. Please contact us

+44 (0) 1303 857200
sales@ancestors.co.uk

CROSS JEWELLERY

Just some of our varied jewellery collection

NECKLACES



EARRINGS



EARRINGS



BRACELETS



Prices on Application

We are happy to discuss any specific ideas for product and/or finishes you may have. Please contact us

+44 (0) 1303 857200
sales@ancestors.co.uk

ROSE WINDOW SET

This sterling silver necklace and earring set was created from the Bishops Eye Rose Window image from Lincoln Cathedral.
The glass was removed digitally leaving the tracery.

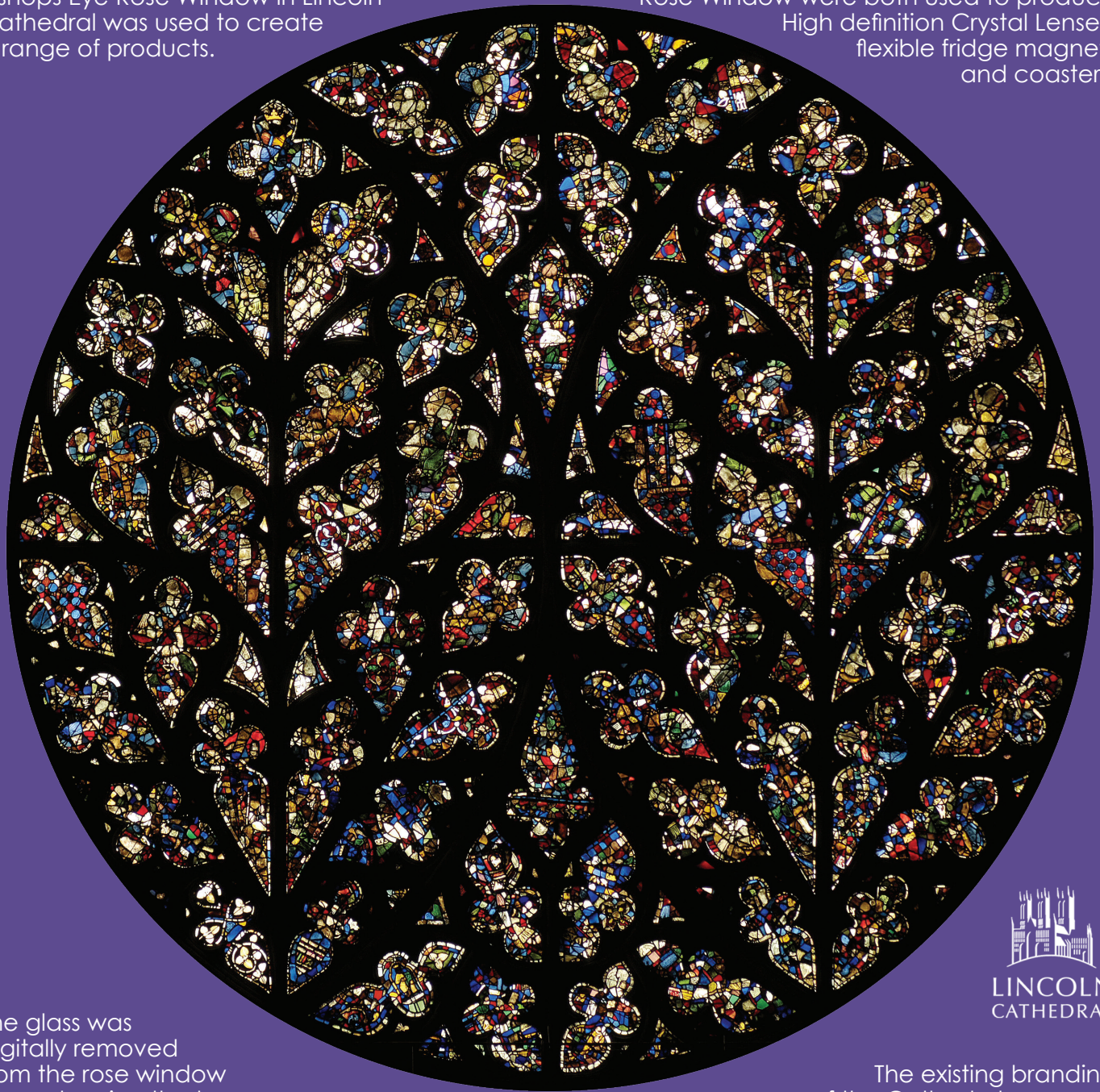


CATHEDRAL RANGE

Not limited to Cathedrals alone this range of products takes fabulous works of art, typically stained glass windows; logo's and branding ideas and turns them into merchandise for visitors to keep as souvenirs of their visit.

This high-quality image of the grand Bishops Eye Rose Window in Lincoln Cathedral was used to create a range of products.

The image shown here and the Deans Eye Rose Window were both used to produce High definition Crystal Lensed flexible fridge magnets and coasters.



The glass was digitally removed from the rose window image leaving the tracery alone and this was used to create an inspired sterling silver necklace and earring set.

The existing branding of the Cathedral was used to create a stunning range of engraved glassware and the packaging



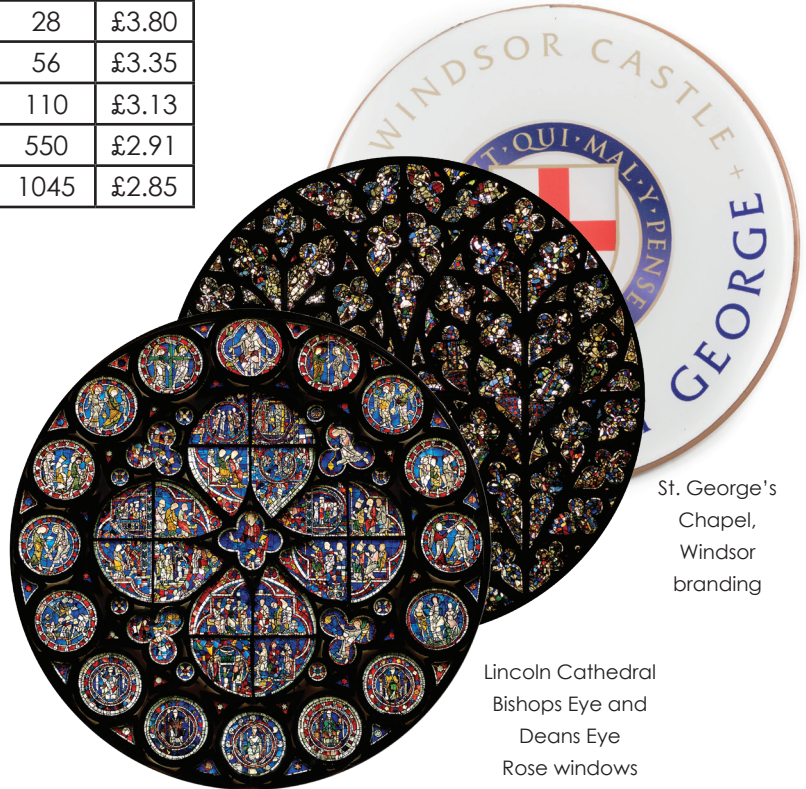
LOW MINIMUMS & FAST DELIVERY

Our high definition "Crystal Lens" process enhances images giving them a backlit screen effect of unique quality and enhanced feel impossible to recreate with traditional printing techniques.

All lensed items are printed to museum quality standards are protected using a clear epoxy doming resin. Hold and touch them, dig your nails into them and watch the mark bounce back without leaving a trace. The domed effect also gives a magnification and enhances the striking high image quality.

MULTIPURPOSE MAGNETIC COASTERS

Code: 74112-RCD	
Qty	Price
28	£3.80
56	£3.35
110	£3.13
550	£2.91
1045	£2.85



St. George's Chapel, Windsor branding

Lincoln Cathedral Bishops Eye and Deans Eye Rose windows

FLEXIBLE FRIDGE MAGNETS

Available in three formats:

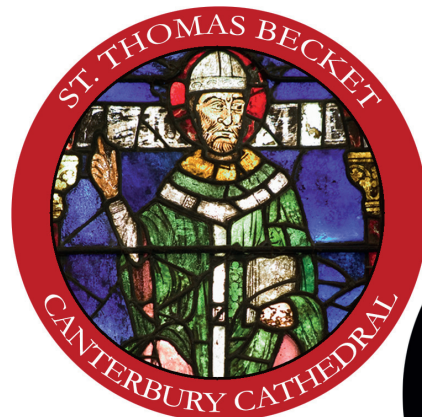
Round (code 74101) (60mm diameter)

Square (code 74102) (60mm x 60mm)

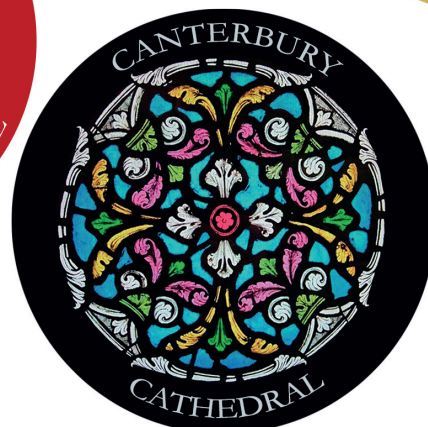
Rectangular (code 74103) (52mm x 78mm)



St. George's Chapel, Windsor branding



Canterbury Cathedral Stained Glass and other artwork



Magnets	
Qty	Price
100	£1.41
300	£1.07
600	£0.99

SOUVENIR SPOON



116mm
Souvenir
Spoon in
presentation
box

Code: 72122	
Qty	Price
50	£4.04
100	£3.90
250	£3.80

CHROME KEY-RINGS

Available in
three formats:

Round (code 74203)
(30mm diameter)

Square
(code 74017)
(30mm x 30mm)

Rectangular (code 74103)



Key-rings	
Qty	Price
100	£2.56
500	£2.46

Pill Boxes Code: 74033	
Qty	Price
50	£4.04



PILL BOXES

48mm Round Pill or Pocket
Boxes, made from the highest
quality steel with a push
button opening.
(Also available in oval format)

HEAVY DUTY GLASS PAPERWEIGHTS

88mm Heavy
duty Round
Paperweight



Code: 74150	
Qty	Price
50	£5.31
100	£5.11
250	£4.91

COMPACT

70mm Round
Compact



Compacts Code: 72530	
Qty	Price
50	£5.31

Images from stained glass windows in
Holy Trinity Church, Folkestone

LASER ENGRAVED GLASS

GLASSWARE



Lincoln Cathedral & Westminster Abbey branding

PAD PRINTED GLASS



Hever & Leeds
Castle branding

Prices on Application

CHESS SETS

Painted Code: 16185	
Qty	Price
1	£249.70

Unpainted Code: 15185	
Qty	Price
1	£181.50



Medieval Cathedral Hand Painted Resin Chess Set

HAND CAST POLYSTONE RESIN FIGURINES

Canterbury Cathedral Resin Gargoyle Set



Code: 55211



Code: 55224

Gargoyles	
Qty	Price
25	£1.95



Code: 55212



Code: 55210



HAND CAST LEAD-FREE PEWTER FIGURINES



St. George's Chapel, Windsor

HERALDIC KEY-FOB, COASTER

312 Named British Heraldic Key-fobs and Coasters with English, Scottish, Irish and Welsh names available off the shelf.

Laminated and "Crystal Lens" Coasters from 91p each

The spinner is supplied FREE on loan and holds 180 names x 6 coasters a total of 1080 coasters. (Choose from a list of 312 names).

Available in two formats these felt backed 88mm diameter coasters show the surname history and an associated coat of arms in full colour.

They can be supplied laminated in the traditional style or can be enhanced using our unique "Crystal Lens" covering, this gives a special quality and feel, lifting the image to a new level.

Any name can be researched and produced and top-ups are available in minimum quantities of 6 per name.

Laminated coasters (code 00022)
 (1080 x £1.00) = £1,090.80
 (540 x £1.14) = £615.60

"Crystal Lens" coasters (code 74201)
 (1080 x £1.80) = £1,944.00
 (540 x £2.06) = £1,112.40

Acrylic and "Crystal Lens" Key-fobs
 from 79p each

The spinner is supplied FREE on loan and holds 312 names x 6 key-fobs a total of 1,872 key-fobs. (Choose from a list of 312 names).

Available in two formats these key-fobs show the surname history on one side and an associated coat of arms, in full colour, on the other.

They can be supplied as traditional acrylic key-fobs or enhanced using our chrome key-rings with the unique "Crystal Lens" covering, giving them a special quality and feel, lifting the images to new levels.

Any name can be researched and produced and top-ups are available in minimum quantities of 6 per name.

Acrylic Key-fobs (code 00021)
 (1872 x £0.83) = £1,553.76
 (936 x £1.03) = £964.08

"Crystal Lens" key-rings
 (code 72112)
 (1872 x £1.93) = £3,612.96
 (936 x £2.13) = £1,993.68



AND PIN BADGE SPINNERS

HERALDIC

COAT OF ARMS

PIN BADGES



Great for all the family and really good for your male customers who can be tricky to cater for. Enamelled pin badges depicting your family Coat of Arms and your family motto. Presented on a gloss laminated gift card/keepsake which also gives you the origination of your name and the translation of your family motto.

The Coat of Arms are taken from authentic hand drawn original artwork associated with your name compiled by leading genealogists and heraldists. The range includes the top 194 UK Surnames researched from the latest census so you have the best offering for your customers.

The 200 pin display (we have doubled up on the top 6 surnames) makes it easy for your customers to see where their names are and also makes it easy for you to re-order and merchandise the display.

The stand is provided free on loan if ordering the complete spinner. Top up orders are available at 6 per name.

Ordered in units of 6 (code 00046) £1.61 per unit



Complete Spinner (code 00045) £1940.40 stand is provided free 200 x 6 = 1200 pins



HERALDIC

First Name Origins (A4)

Discover the meaning of any first name with these decorative first name scrolls. Each scroll gives the meaning of the name, its origins and associations as well as lucky numbers. All are available either unframed or framed with a walnut-effect finish measuring (210 x 297mm).

Direct dispatch packaged size and weights:
 Unframed size = 330 x 230 x 1mm weight = 75g Framed size = 335 x 245 x 20mm weight = 420g



History of First Name (A4)

The information given on these beautiful scrolls is fully researched from original manuscripts and reference books by our team of researchers who over the last three years have researched and added more than 300 first names each year and have never yet been beaten by a name. These attractive full colour documents can be printed on a variety of quality A4 (210x297mm) size papers as shown below.

Direct dispatch packaged size and weights:
 Unframed size = 330 x 230 x 1mm weight = 75g Framed size = 335 x 245 x 20mm weight = 420g



History of Surname (A4)

Unlike many systems available today our surname histories are fully researched from original manuscripts and reference books by our team of researchers. Over the past three years we have added over 8,500 names to our list of surnames and pride ourselves on the fact that have never yet been beaten by any name, even if this means commissioning research abroad. These full colour documents can be printed on a variety of quality A4 (210x297mm) size papers as shown below.

Direct dispatch packaged size and weights:
 Unframed size = 330 x 230 x 1mm weight = 75g Framed size = 335 x 245 x 20mm weight = 420g



History of Surname (11 x 14)

As mentioned before our Surnames histories are fully researched from original manuscripts and reference books by our team of researchers (unlike many other systems). Over the past three years we have added over 8,500 names to our list of surnames and pride ourselves on the fact that have never yet been beaten by any name even if this means commissioning research abroad. These full colour documents can be printed on a variety of quality 11x14 (360x280mm) size papers as shown below.

Direct dispatch packaged size and weights:
 Unframed size = 400 x 297 x 1mm weight = 80g
 Framed size = 400 x 325 x 20mm weight = 575g



History of Surname (A3)

These deluxe versions of our surname histories contain all the information given on the A4 and 11 x 14" scrolls detailed above but are produced in full colour on the larger A3 (420 x 297) sized paper.

Direct dispatch packaged size & weights:

Unframed size = 440 x 320 x 1mm
 weight = 80g

Framed size = 465 x 345 x 20mm
 weight = 700g



Coat of Arms Prints

To produce these genuine Coats of Arms, our research team initially research the sur-name using original manuscripts and reference books to find a blazon (the heraldic description of the Arms) associated with the surname. Our artist then draws the various elements needed to produce the arms. Once completed our team then compile these elements as instructed by the blazon to create an accurate pictorial representation of the genuine Coat of Arms. Within the past three years we have added over 5,000 Arms to our collection and these are available as full colour documents printed on a variety of quality papers as shown below.



Coat of Arms (A4)

Direct dispatch packaged size and weights:

Unframed = 330 x 230 x 1mm weight = 75g
Framed = 335 x 245 x 20mm weight = 420g



A3 Deluxe Scroll

This deluxe version of our Coat of Arms print is set within a heraldic boarder setting giving a wonderfully colourful display for that special touch.

Direct dispatch packaged size and weights:

Unframed = 440 x 320 x 1mm weight = 80g

Framed = 465 x 345 x 20mm weight = 700g



Double Coat of Arms

A wonderful gift idea for weddings or anniversaries. This scroll gives two Coat of Arms, together with the special date, if required. Printed in full colour on parchment style A4 (297x210mm) or A3 (420x297mm) size paper.

A4 Scroll

Direct dispatch size and weights:

Unframed = 230 x 330 x 1mm weight = 75g
Framed = 245 x 335 x 20mm weight = 420g



A3 Deluxe Scroll

Direct dispatch packaged size and weights:

Unframed = 440 x 320 x 1mm weight = 80g

Framed = 465 x 345 x 20mm weight = 700g

HERALDIC

Combination Items

The following range of personalised items draw on various combinations taken from our three core personalised products, History of First Names, Surnames and Coat of arms as detailed in the previous sections. The same amount of work and detail goes into each.



Certificate of Arms

This unique scroll combines the surname history, the blazon for an associated Coat of Arms and a graphical representation of the Coat of Arms.

Printed onto fine quality parchment style A4 (210x297mm) size paper.

Direct dispatch packaged size and weights:

Unframed = 230 x 330 x 1mm weight = 75g
Framed = 245 x 335 x 20mm weight = 420g



Coat of Arms & Name Certificate

(Deluxe A3 Scroll)

This is our most comprehensive personalised document offering personalisation right down to a single individual. The scroll features the History of First Name, Surname and displays an associated coat of arms.

Printed onto fine quality parchment style A3 (420x297mm) size paper.

Direct dispatch packaged size and weights:

Unframed 440x320x1mm weight = 80g
Framed 465x345x20mm weight = 700g

Personalised Paperweights

Available in three different formats, First Name, Surname or Coat of Arms, these deluxe paperweights are the ideal solution for both home and office use.

The heavyweight glass measures 70mm in diameter and at 22mm in height keep your papers safe.



Choose a single item or group any variation of the three to form a set.

Direct dispatch packaged size & weights:

Single 205 x 160 x 35mm weight = 215g Set of 3 205 x 160 x 70mm weight = 700g



Heraldic Tondo Wall Plaque

This fully researched Coat of Arms is set into a finely hand crafted cold-cast metal resin plaque, set in high relief (200mm diameter). Available in two finishes, bronze or pewter, with name plate and hook.

Direct dispatch packaged size and weight: size = 100 x 270 x 95mm weight = 1,060g

Heraldic Writing Set

This unique gift set contains ten A5 sheets of parchment type paper displaying the Coat of Arms associated with any surname together with the name. Also included in the set are ten envelopes and ten pieces of A5 continuation paper in matching parchment type paper.

Direct dispatch packaged size and weights: size = 240 x 180 x 1mm weight = 160g



PACKAGING AND STORY TELLING

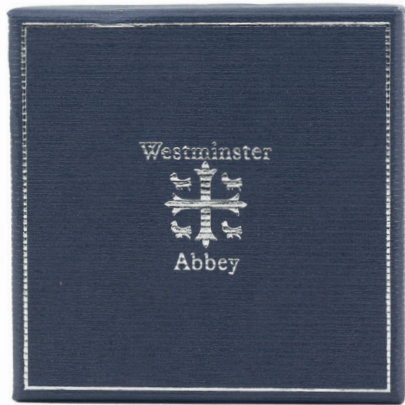
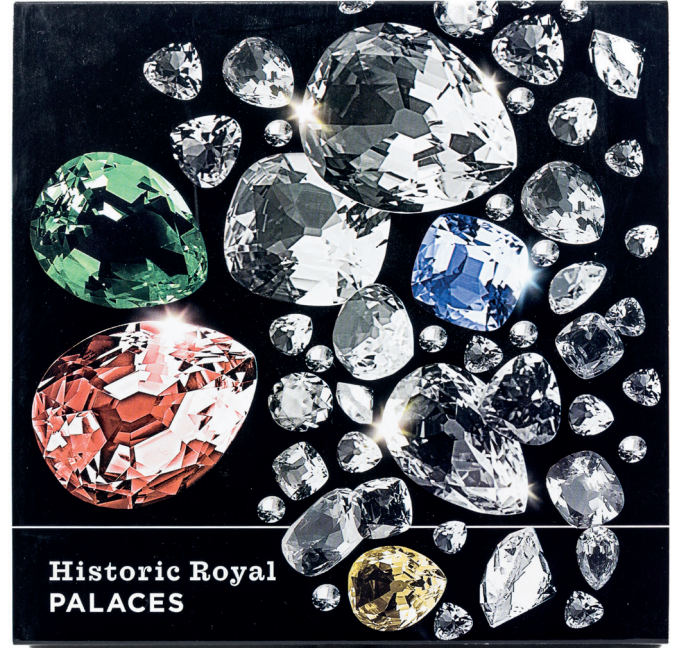
As with most of the products produced by Ancestors® the packaging and/or romance cards tell the story of the item enclosed.

Jewellery items generally have romance cards that include a picture of the original artwork that inspired its creation together with historical information or other details.

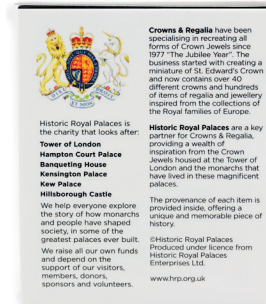
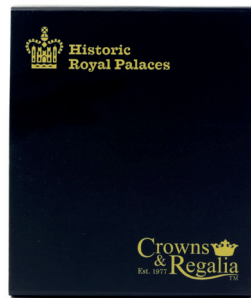
Other items mostly have Eurohooked packaging that includes space on the reverse to tell the story.

All can include barcodes and other site-specific information and branding.

BESPOKE BOXES AND SLEEVES

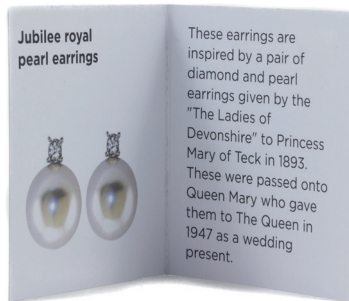
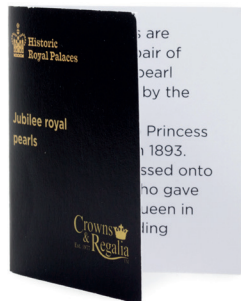


Left, a Jewellery Box with silver blocking logo and border applied for Westminster Abbey

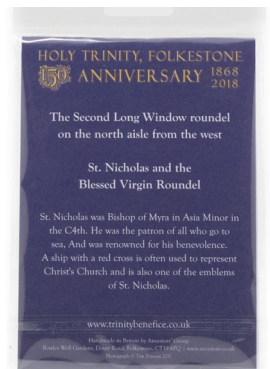


Above and left, a Jewellery Box sleeve and smaller Jewellery box, front and back designed for Historic Royal Palaces

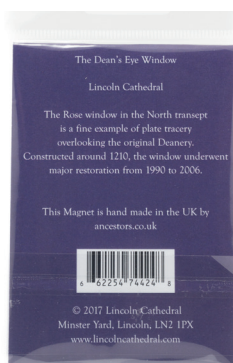
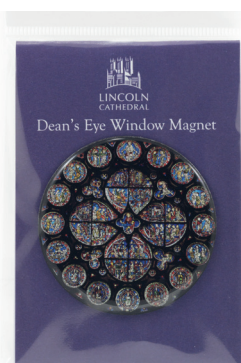
ROMANCE AND HANGING CARDS



Left, a romance card showing the outside and inside of a Historic Royal Palaces set of earrings. Includes branding, original image and story text.

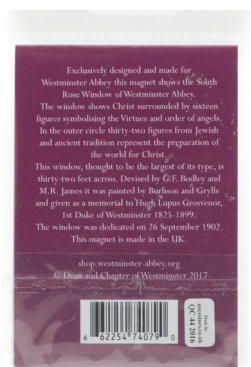
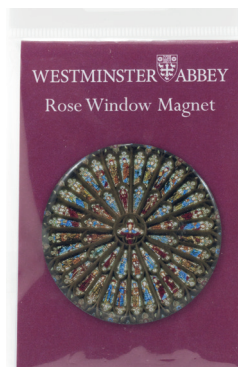


Above, coaster packaging for stained glass windows at Holy Trinity Church, Folkestone with branding and story text on the reverse



Right, Fridge Magnet packaging for the Rose Window in Westminster Abbey with story text, branding and barcode on the reverse

Left, Fridge Magnet packaging for the Dean's Eye Window in Lincoln Cathedral with story text, branding and barcode on the reverse



GENERAL ORDERING INFORMATION

Costs

All origination and artwork costs are included in the prices shown, therefore there are no hidden extra costs to be incurred. Where bar-coding is required and not directly printed on header card or product packaging then an extra charge of 2p per item is chargeable.

Artwork

We prefer to receive the PDF format artwork whenever possible, but all standard formats are acceptable at the highest resolution, at least 300dpi. Approval must be made at the customer's earliest convenience to achieve the stated delivery dates. Because of the numerous different printing production processes applied to the products, the colours shown on the artwork may vary slightly. If specific colour matches are required then colour swatches, previous examples or Pantone reference numbers should be provided.

Copyright

Orders involving the reproduction of original artwork are accepted on the understanding that the customer is either the copyright owner or has been given written permission to use it. Ancestors® Group will not be liable for any claim against the customer for copyright infringement. As such, Ancestors® Group is exempt against all incidental costs or consequential claims.

Lead Times

Being a genuine UK manufacturer means that, following customer approval for artwork, products are usually manufactured within 7-14 working days unless otherwise informed. We, therefore, avoid the long import schedules, that sometimes can exceed 20 weeks. Ancestors® Group cannot be held responsible for any delays due to circumstances beyond our direct control, and you will be informed, as early as possible, should any unforeseen delays occur.

Payment

New customers should satisfy us that they are genuine trade clients or distributors and, unless agreed in advance, will be issued with a proforma invoice and only after the funds have cleared our bank account will production commence. International buyers (those that are not resident in the UK) must provide a valid ID number. Credit facilities are available and can be applied for and once approved, credit accounts receive 30 days credit from the date of invoice. Longer terms are strictly by prior written agreement. We reserve the right to charge outstanding balances over 30 days a surcharge of 1.75% plus a daily interest rate of 3% above the Nat West bank rate prevailing at the time. Prices are as agreed and are subject to VAT and Carriage.

Carriage

Carriage will be paid by Ancestors® on all orders over £295 (UK mainland only). Carriage for orders under £295 is charged at £10.00 or at cost whichever is the greater unless other arrangements have been agreed. For overseas and off-shore Islands carriage costs will be supplied by quotation, available on request.

Reservation of Title

All goods remain the property of Ancestors® Group until paid for in full, but the risk passes to the buyer on delivery. Claims for damaged goods or shortages will not be accepted unless notified to the Ancestors® Group within 7 days. We reserve the right to examine the goods. Claims for non-delivery will not be accepted unless notified within 7 days of the invoice date.



ANCESTORS[®]
Est. 1992 GROUP

Ancestors[®] Group
Unit 2a, Bowles Well Gardens
Dover Road
Folkestone
Kent CT19 6PQ

www.ancmanufacturing.co.uk

ORDERING FROM ANCESTORS

Please call our sales team

t: +44 (0) 1303 857200

f: +44 (0) 1303 857201

e: sales@ancestors.co.uk

All information & prices correct at the time of printing. E&OE

